



ACCESSING THE PAYUSA USER INTERFACE

Step 1: Access the PayUSA website. There are two options to gain access:

Option 1: Copy/Paste or type in the link below to your device browser

- Go to <https://myisolved.com/cloudservice> in your device browser.
- **NOTE:** Use your specific iSolved URL will be <https://payusa.myisolved.com/cloudservice>

Option 2: Use your phone/tablet to scan the PayUSA QR code to access the site login page.



Step 2: Log in using your self-service email (the personal email address you provided when hired).

Step 3: Complete the Two-Factor Authentication.

- Two-factor authentication will be required on your first login.
- Changing devices (or browsers on the same device) will also require additional two-factor authentication.

Step 4: Make sure to completely log-out once finished on the PayUSA site.

Contacts for Questions?

Operations/HR Manager at 302-731-0301 x101 or mshorter@forwardjourney.org
PayUSA at 610-337-3000, support@payusa.com

INSTALLING THE PAYUSA USER INTERFACE AS AN APP

Examples below include installation for Mobile Chrome, Mobile FoxFire Mobile Safari,
Desktop Microsoft Edge, Desktop Chrome, Desktop Firefox

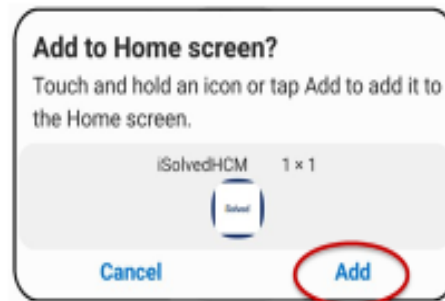
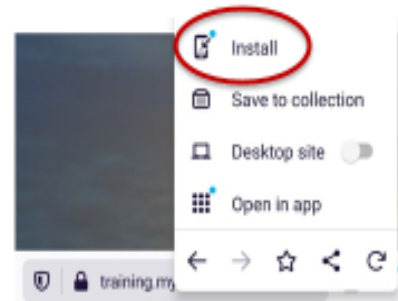
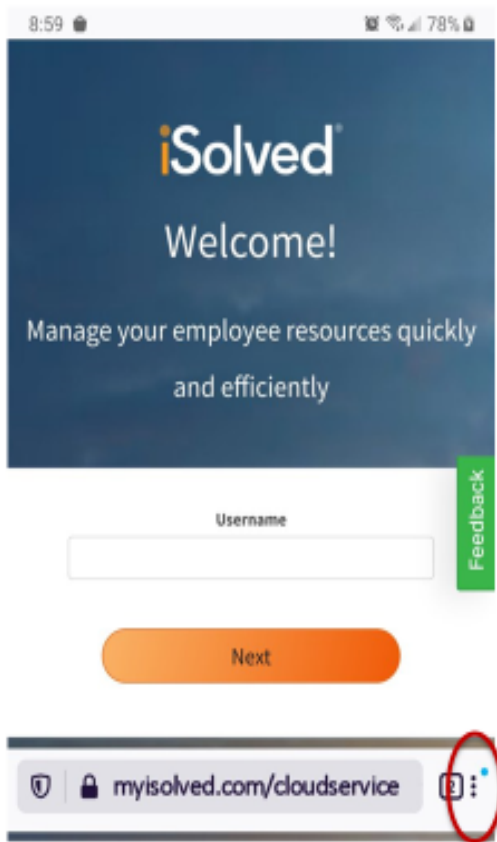
New UI for Self-Service

iSolved Network

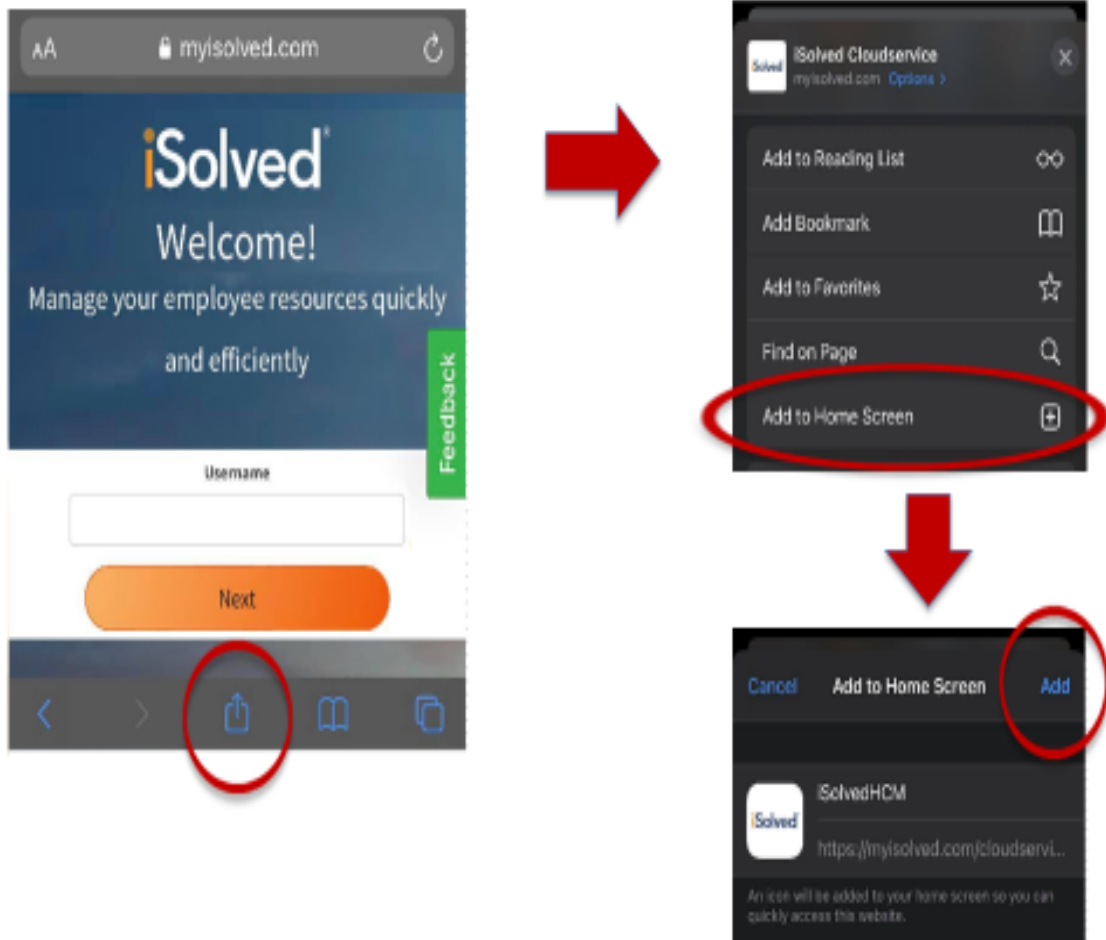
Example Installing the New UI as an App on **Mobile Chrome**



Example Installing the New UI as an App on **Mobile Firefox**

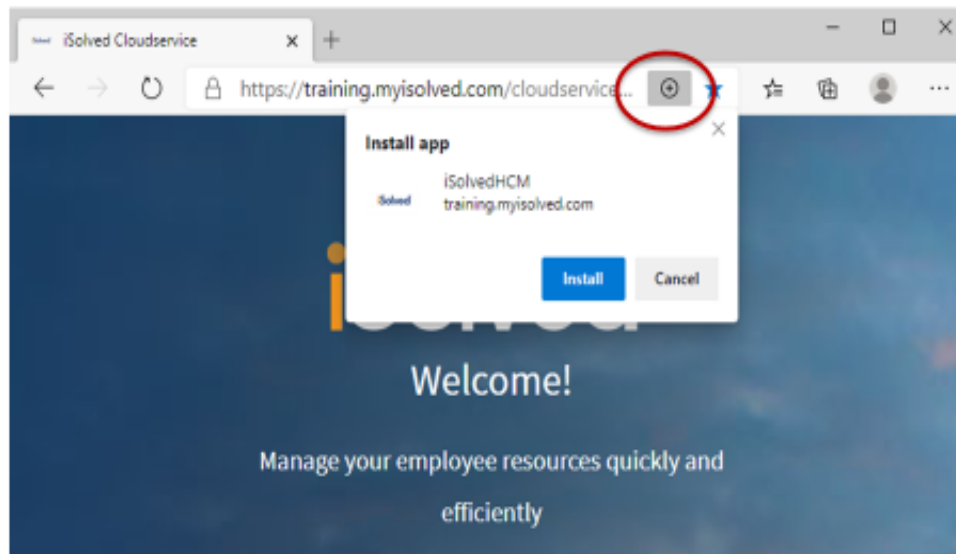


Example Installing the New UI as an App on Mobile Safari



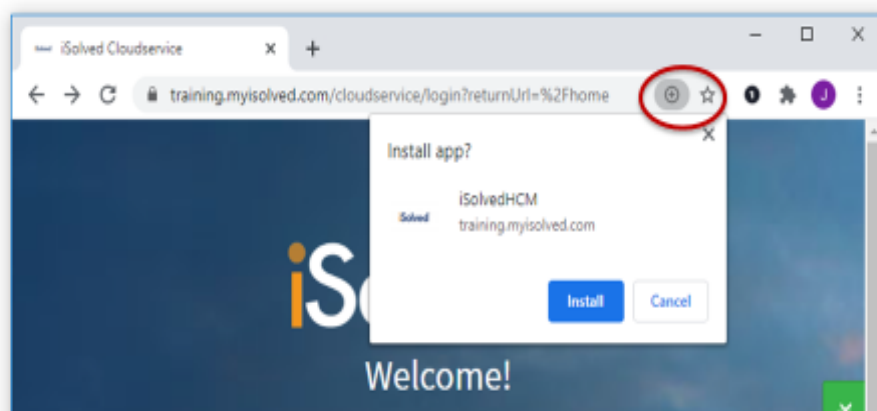
Example Installing the New UI as an App on Desktop MS Edge

- Requires MS Edge version 8x.x.x.x or higher.
- Current version is 85.x.x.x



Example Installing the New UI as an App on Desktop Chrome

- Google Chrome has supported "Add To Home Screen" for sometime however, keep Chrome up to date for the best user experience.



Example Installing the New UI as an App on Desktop Firefox

- App Mode is normally disabled in Desktop Firefox. You can use Firefox's "about:config" to change the "browser.ssb.enabled" setting from false to true.

